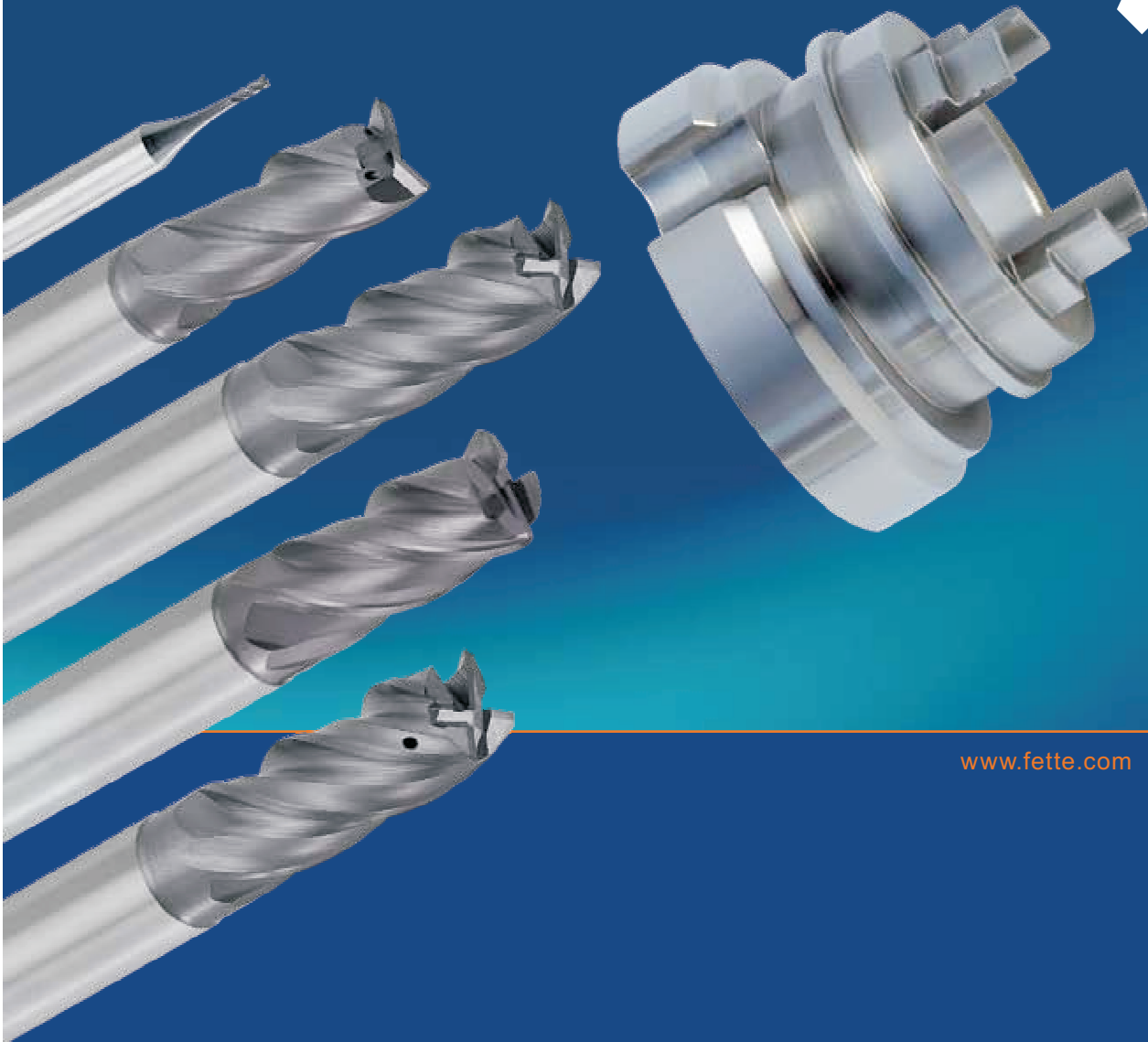


# AKČNÍ CENY

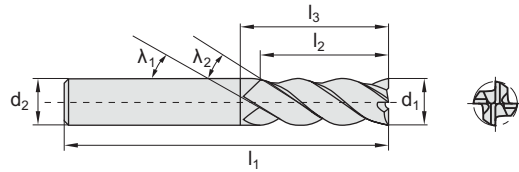
DHC

In der Ruhe liegt seine Stärke  
Vibration-free performance



Vollhartmetall  
 stirnseitig bis Mitte  
 schneidend  
 NC-gerecht

Solid carbide  
 center cutting  
 suitable for NC



$\lambda_1$   $\lambda_2$   $l_3$   $l_2$

$d_2$   $d_1$



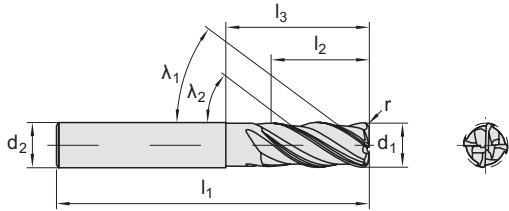
| Katalog-Nr.       | Cat.-No.         | 1521 C                                        |       | 1522 C      |                        |                        |
|-------------------|------------------|-----------------------------------------------|-------|-------------|------------------------|------------------------|
| Typ               | Type             | DHC                                           |       |             |                        |                        |
| Norm              | Standard         | DIN 6527 A / DIN 6528                         |       | DIN 6527 B  |                        |                        |
| Drallwinkel       | Helix angle      | $\lambda_1 / \lambda_2 = 35^\circ / 38^\circ$ |       |             |                        |                        |
| Schaftausführung  | Shank design     | DIN 6535 HA                                   |       | DIN 6535 HB |                        |                        |
| Beschichtung      | Coating          | AL2 Plus                                      |       |             |                        |                        |
| Schneidstoffsorte | Cutting material | LC630T                                        |       |             |                        |                        |
| Besonderheiten    | Special features | Kantenschutzfase Edge protection chamfer      |       |             |                        |                        |
| $d_1$ h10         | $l_2$            | $l_1$                                         | $l_3$ | $d_2$ h6    | Ident No.              | Ident No.              |
| kurz short        |                  |                                               |       |             |                        |                        |
| 1                 | 1,5              | 40                                            | 2     | 4           | 9186421 <b>718,-</b>   | –                      |
| 2                 | 3                | 40                                            | 4     | 4           | 9186422 <b>718,-</b>   | –                      |
| 3                 | 4                | 40                                            | 6     | 4           | 9186423 <b>746,-</b>   | –                      |
| 4                 | 5                | 54                                            | 8     | 6           | 1190000 <b>718,-</b>   | 1190010 <b>746,-</b>   |
| 5                 | 6                | 54                                            | 10    | 6           | 1190001 <b>689,-</b>   | 1190011 <b>718,-</b>   |
| 6                 | 7                | 54                                            | 16    | 6           | 1190002 <b>660,-</b>   | 1190012 <b>689,-</b>   |
| 8                 | 9                | 58                                            | 20    | 8           | 1190003 <b>861,-</b>   | 1190013 <b>890,-</b>   |
| 10                | 11               | 66                                            | 24    | 10          | 1190004 <b>1 033,-</b> | 1190014 <b>1 062,-</b> |
| 12                | 12               | 73                                            | 26    | 12          | 1190005 <b>1 277,-</b> | 1190015 <b>1 335,-</b> |
| 14                | 14               | 75                                            | 28    | 14          | 1190006 <b>1 622,-</b> | 1190016 <b>1 679,-</b> |
| 16                | 16               | 82                                            | 32    | 16          | 1190007 <b>2 081,-</b> | 1190017 <b>2 138,-</b> |
| 18                | 18               | 84                                            | 34    | 18          | 1190008 <b>2 483,-</b> | 1190018 <b>2 569,-</b> |
| 20                | 20               | 92                                            | 40    | 20          | 1190009 <b>3 057,-</b> | 1190019 <b>3 143,-</b> |
| lang long         |                  |                                               |       |             |                        |                        |
| 1                 | 2,5              | 40                                            | 3     | 4           | 9186424 <b>746,-</b>   | –                      |
| 2                 | 4                | 40                                            | 6     | 4           | 9186425 <b>746,-</b>   | –                      |
| 3                 | 6                | 40                                            | 9     | 4           | 9186426 <b>804,-</b>   | –                      |
| 4                 | 8                | 54                                            | 12    | 6           | 1110700 <b>890,-</b>   | 1110705 <b>933,-</b>   |
| 5                 | 10               | 54                                            | 15    | 6           | 1110701 <b>861,-</b>   | 1110706 <b>904,-</b>   |
| 6                 | 13               | 57                                            | 21    | 6           | 1110223 <b>861,-</b>   | 1110231 <b>904,-</b>   |
| 8                 | 19               | 63                                            | 27    | 8           | 1110224 <b>1 119,-</b> | 1110232 <b>1 162,-</b> |
| 10                | 22               | 72                                            | 32    | 10          | 1110225 <b>1 292,-</b> | 1110233 <b>1 349,-</b> |
| 12                | 26               | 83                                            | 38    | 12          | 1110226 <b>1 679,-</b> | 1110234 <b>1 736,-</b> |
| 14                | 26               | 83                                            | 38    | 14          | 1110227 <b>2 153,-</b> | 1110235 <b>2 181,-</b> |
| 16                | 32               | 92                                            | 44    | 16          | 1110228 <b>2 813,-</b> | 1110236 <b>2 841,-</b> |
| 18                | 34               | 92                                            | 44    | 18          | 1110229 <b>3 439,-</b> | 1110237 <b>3 473,-</b> |
| 20                | 38               | 104                                           | 54    | 20          | 1110230 <b>4 233,-</b> | 1110238 <b>4 262,-</b> |

Kantenschutzfase Edge protection chamfer

|  | $d_1$ | b     |
|--|-------|-------|
|  | 1     | 0,025 |
|  | 2     | 0,05  |
|  | 3     | 0,075 |
|  | 4     | 0,1   |
|  | 5     | 0,15  |
|  | 6–12  | 0,2   |
|  | 14–20 | 0,3   |

Vollhartmetall  
 stirnseitig bis Mitte  
 schneidend  
 NC-gerecht

Solid carbide  
 center cutting  
 suitable for NC



|                   |                  |                                               |
|-------------------|------------------|-----------------------------------------------|
| Katalog-Nr.       | Cat.-No.         | 1520 C                                        |
| Typ               | Type             | DHC                                           |
| Norm              | Standard         | DIN 6527 B                                    |
| Drallwinkel       | Helix angle      | $\lambda_1 / \lambda_2 = 35^\circ / 38^\circ$ |
| Schaftausführung  | Shank design     | DIN 6535 HB                                   |
| Beschichtung      | Coating          | AL2 Plus                                      |
| Schneidstoffsorte | Cutting material | LC630T                                        |
| Besonderheiten    | Special features | Eckenradius Corner radius                     |

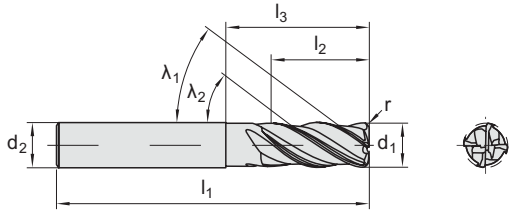
| d <sub>1</sub> h10 | r   | l <sub>2</sub> | l <sub>1</sub> | l <sub>3</sub> | d <sub>2</sub> h6 | Ident No. |                |
|--------------------|-----|----------------|----------------|----------------|-------------------|-----------|----------------|
| kurz short         |     |                |                |                |                   |           |                |
| 6                  | 0,5 | 7              | 54             | 12             | 6                 | 9195575   | <b>761,-</b>   |
| 6                  | 1   | 7              | 54             | 12             | 6                 | 9195578   | <b>761,-</b>   |
| 6                  | 1,5 | 7              | 54             | 12             | 6                 | 9195579   | <b>761,-</b>   |
| 8                  | 0,5 | 9              | 58             | 16             | 8                 | 9195580   | <b>976,-</b>   |
| 8                  | 1   | 9              | 58             | 16             | 8                 | 9195581   | <b>976,-</b>   |
| 8                  | 1,5 | 9              | 58             | 16             | 8                 | 9195582   | <b>976,-</b>   |
| 8                  | 2   | 9              | 58             | 16             | 8                 | 9195583   | <b>976,-</b>   |
| 10                 | 0,5 | 11             | 66             | 20             | 10                | 9195584   | <b>1 177,-</b> |
| 10                 | 1   | 11             | 66             | 20             | 10                | 9195585   | <b>1 177,-</b> |
| 10                 | 1,5 | 11             | 66             | 20             | 10                | 9195586   | <b>1 177,-</b> |
| 10                 | 2   | 11             | 66             | 20             | 10                | 9195587   | <b>1 177,-</b> |
| 12                 | 0,5 | 12             | 73             | 24             | 12                | 9195588   | <b>1 464,-</b> |
| 12                 | 1   | 12             | 73             | 24             | 12                | 9195589   | <b>1 464,-</b> |
| 12                 | 1,5 | 12             | 73             | 24             | 12                | 9195590   | <b>1 464,-</b> |
| 12                 | 2   | 12             | 73             | 24             | 12                | 9195591   | <b>1 464,-</b> |
| 14 <sup>1)</sup>   | 1   | 14             | 75             | 28             | 14                | 9195592   | <b>1 851,-</b> |
| 14 <sup>1)</sup>   | 1,5 | 14             | 75             | 28             | 14                | 9195593   | <b>1 851,-</b> |
| 14 <sup>1)</sup>   | 2   | 14             | 75             | 28             | 14                | 9195594   | <b>1 851,-</b> |
| 16                 | 1   | 16             | 82             | 32             | 16                | 9195595   | <b>2 353,-</b> |
| 16                 | 1,5 | 16             | 82             | 32             | 16                | 9195597   | <b>2 353,-</b> |
| 16                 | 2   | 16             | 82             | 32             | 16                | 9195598   | <b>2 353,-</b> |
| 18                 | 1   | 18             | 84             | 36             | 18                | 9195599   | <b>2 827,-</b> |
| 18                 | 1,5 | 18             | 84             | 36             | 18                | 9195601   | <b>2 827,-</b> |
| 18                 | 2   | 18             | 84             | 36             | 18                | 9195602   | <b>2 827,-</b> |
| 20                 | 1   | 20             | 92             | 40             | 20                | 9195603   | <b>3 473,-</b> |
| 20                 | 1,5 | 20             | 92             | 40             | 20                | 9195604   | <b>3 473,-</b> |
| 20                 | 2   | 20             | 92             | 40             | 20                | 9195605   | <b>3 473,-</b> |

<sup>1)</sup> Lieferzeit auf Anfrage

<sup>1)</sup> Delivery time upon request

Vollhartmetall  
 stirnseitig bis Mitte  
 schneidend  
 NC-gerecht

Solid carbide  
 center cutting  
 suitable for NC



|                   |                  |                                               |
|-------------------|------------------|-----------------------------------------------|
| Katalog-Nr.       | Cat.-No.         | 1520 C                                        |
| Typ               | Type             | DHC                                           |
| Norm              | Standard         | DIN 6527 B                                    |
| Drallwinkel       | Helix angle      | $\lambda_1 / \lambda_2 = 35^\circ / 38^\circ$ |
| Schaftausführung  | Shank design     | DIN 6535 HB                                   |
| Beschichtung      | Coating          | AL2 Plus                                      |
| Schneidstoffsorte | Cutting material | LC630T                                        |
| Besonderheiten    | Special features | Eckenradius Corner radius                     |

| d <sub>1</sub> h10 | r   | l <sub>2</sub> | l <sub>1</sub> | l <sub>3</sub> | d <sub>2</sub> h6 | lang long | Ident No. |         |
|--------------------|-----|----------------|----------------|----------------|-------------------|-----------|-----------|---------|
| 6                  | 0,5 | 13             | 57             | 21             | 6                 |           | 9195608   | 990,-   |
| 6                  | 1   | 13             | 57             | 21             | 6                 |           | 9195609   | 990,-   |
| 6                  | 1,5 | 13             | 57             | 21             | 6                 |           | 9195610   | 990,-   |
| 8                  | 0,5 | 19             | 63             | 27             | 8                 |           | 9195611   | 1 277,- |
| 8                  | 1   | 19             | 63             | 27             | 8                 |           | 9195612   | 1 277,- |
| 8                  | 1,5 | 19             | 63             | 27             | 8                 |           | 9195613   | 1 277,- |
| 8                  | 2   | 19             | 63             | 27             | 8                 |           | 9195614   | 1 277,- |
| 10                 | 0,5 | 22             | 72             | 32             | 10                |           | 9195615   | 1 478,- |
| 10                 | 1   | 22             | 72             | 32             | 10                |           | 9195616   | 1 478,- |
| 10                 | 1,5 | 22             | 72             | 32             | 10                |           | 9195617   | 1 478,- |
| 10                 | 2   | 22             | 72             | 32             | 10                |           | 9195618   | 1 478,- |
| 12                 | 0,5 | 26             | 83             | 38             | 12                |           | 9195619   | 1 909,- |
| 12                 | 1   | 26             | 83             | 38             | 12                |           | 9195620   | 1 909,- |
| 12                 | 1,5 | 26             | 83             | 38             | 12                |           | 9195621   | 1 909,- |
| 12                 | 2   | 26             | 83             | 38             | 12                |           | 9195622   | 1 909,- |
| 14 <sup>1)</sup>   | 1   | 26             | 83             | 38             | 14                |           | 9195623   | 2 396,- |
| 14 <sup>1)</sup>   | 1,5 | 26             | 83             | 38             | 14                |           | 9195624   | 2 396,- |
| 14 <sup>1)</sup>   | 2   | 26             | 83             | 38             | 14                |           | 9195625   | 2 396,- |
| 16                 | 1   | 32             | 92             | 44             | 16                |           | 9195626   | 3 128,- |
| 16                 | 1,5 | 32             | 92             | 44             | 16                |           | 9195628   | 3 128,- |
| 16                 | 2   | 32             | 92             | 44             | 16                |           | 9195629   | 3 128,- |
| 18                 | 1   | 32             | 92             | 44             | 18                |           | 9195630   | 3 817,- |
| 18                 | 1,5 | 32             | 92             | 44             | 18                |           | 9195641   | 3 817,- |
| 18                 | 2   | 32             | 92             | 44             | 18                |           | 9195643   | 3 817,- |
| 20                 | 1   | 38             | 104            | 54             | 20                |           | 9195645   | 4 707,- |
| 20                 | 1,5 | 38             | 104            | 54             | 20                |           | 9195646   | 4 707,- |
| 20                 | 2   | 38             | 104            | 54             | 20                |           | 9195647   | 4 707,- |

<sup>1)</sup> Lieferzeit auf Anfrage

<sup>1)</sup> Delivery time upon request



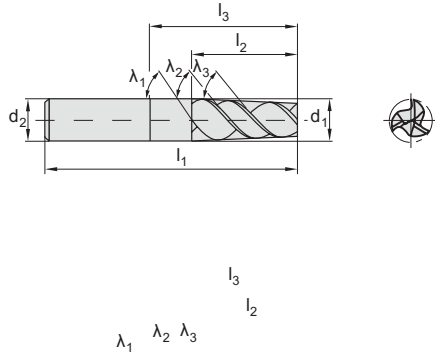
|                   |                  |                                                                      |             |                                                                                                                                                            |
|-------------------|------------------|----------------------------------------------------------------------|-------------|------------------------------------------------------------------------------------------------------------------------------------------------------------|
| Katalog-Nr.       | Cat.-No.         | 1524 C                                                               | 1544 C      | 1550 C                                                                                                                                                     |
| Typ               | Type             | DHC SLOT                                                             |             | DHC SLOT IK / IC                                                                                                                                           |
| Norm              | Standard         | DIN 6527 A                                                           | DIN 6527 B  |                                                                                                                                                            |
| Drallwinkel       | Helix angle      | $\lambda_1 / \lambda_2 / \lambda_3 = 33^\circ / 35^\circ / 37^\circ$ |             |                                                                                                                                                            |
| Schaftausführung  | Shank design     | DIN 6535 HA                                                          | DIN 6535 HB |                                                                                                                                                            |
| Beschichtung      | Coating          | AL2 Plus                                                             |             |                                                                                                                                                            |
| Schneidstoffsorte | Cutting material | LC630T                                                               |             |                                                                                                                                                            |
| Besonderheiten    | Special features | Kantenschutzfase<br>Edge protection chamfer                          |             | Kantenschutzfase,<br>mit innerer Kühlmittel-<br>zufuhr mit axialem Austritt<br>Edge protection chamfer,<br>with internal coolant<br>supply with axial exit |

| d <sub>1</sub> h10 | l <sub>2</sub> | l <sub>1</sub> | l <sub>3</sub> | d <sub>2</sub> h6 | Ident No.              | Ident No.              | Ident No.              |
|--------------------|----------------|----------------|----------------|-------------------|------------------------|------------------------|------------------------|
| kurz short         |                |                |                |                   |                        |                        |                        |
| 4                  | 5              | 54             | 8              | 6                 | 9097465 <b>746,-</b>   | 9097475 <b>775,-</b>   | –                      |
| 5                  | 6              | 54             | 10             | 6                 | 9097466 <b>710,-</b>   | 9097476 <b>746,-</b>   | –                      |
| 6                  | 7              | 54             | 12             | 6                 | 9097467 <b>682,-</b>   | 9097477 <b>718,-</b>   | –                      |
| 8                  | 9              | 58             | 16             | 8                 | 9097468 <b>890,-</b>   | 9097478 <b>918,-</b>   | –                      |
| 10                 | 11             | 66             | 20             | 10                | 9097469 <b>1 076,-</b> | 9097479 <b>1 105,-</b> | –                      |
| 12                 | 12             | 73             | 24             | 12                | 9097470 <b>1 320,-</b> | 9097480 <b>1 378,-</b> | –                      |
| 14                 | 14             | 75             | 28             | 14                | 9097471 <b>1 679,-</b> | 9097481 <b>1 736,-</b> | –                      |
| 16                 | 16             | 82             | 32             | 16                | 9097472 <b>2 153,-</b> | 9097482 <b>2 210,-</b> | –                      |
| 18                 | 18             | 84             | 36             | 18                | 9097473 <b>2 569,-</b> | 9097483 <b>2 669,-</b> | –                      |
| 20                 | 20             | 92             | 40             | 20                | 9097474 <b>3 157,-</b> | 9097484 <b>3 258,-</b> | –                      |
| lang long          |                |                |                |                   |                        |                        |                        |
| 4                  | 8              | 54             | 12             | 6                 | 9097445 <b>918,-</b>   | 9097455 <b>947,-</b>   | –                      |
| 5                  | 10             | 54             | 15             | 6                 | 9097446 <b>890,-</b>   | 9097456 <b>918,-</b>   | –                      |
| 6                  | 13             | 57             | 21             | 6                 | 9097447 <b>890,-</b>   | 9097457 <b>918,-</b>   | 9205360 <b>1 205,-</b> |
| 8                  | 19             | 63             | 27             | 8                 | 9097448 <b>1 162,-</b> | 9097458 <b>1 191,-</b> | 9205361 <b>1 564,-</b> |
| 10                 | 22             | 72             | 32             | 10                | 9097449 <b>1 349,-</b> | 9097459 <b>1 378,-</b> | 9205362 <b>1 851,-</b> |
| 12                 | 26             | 83             | 38             | 12                | 9097450 <b>1 736,-</b> | 9097460 <b>1 794,-</b> | 9205363 <b>2 339,-</b> |
| 14                 | 26             | 83             | 38             | 14                | 9097451 <b>2 224,-</b> | 9097461 <b>2 282,-</b> | –                      |
| 16                 | 32             | 92             | 44             | 16                | 9097452 <b>2 913,-</b> | 9097462 <b>2 970,-</b> | 9205364 <b>3 745,-</b> |
| 18                 | 32             | 92             | 44             | 18                | 9097453 <b>3 545,-</b> | 9097463 <b>3 631,-</b> | –                      |
| 20                 | 38             | 104            | 54             | 20                | 9097454 <b>4 377,-</b> | 9097464 <b>4 477,-</b> | 9205365 <b>5 051,-</b> |

| Kantenschutzfase Edge protection chamfer |                |
|------------------------------------------|----------------|
|                                          | d <sub>1</sub> |
|                                          | 4              |
|                                          | 5              |
|                                          | 6–12           |
|                                          | 14–20          |

Vollhartmetall  
stirnseitig bis Mitte  
schneidend  
NC-gerecht

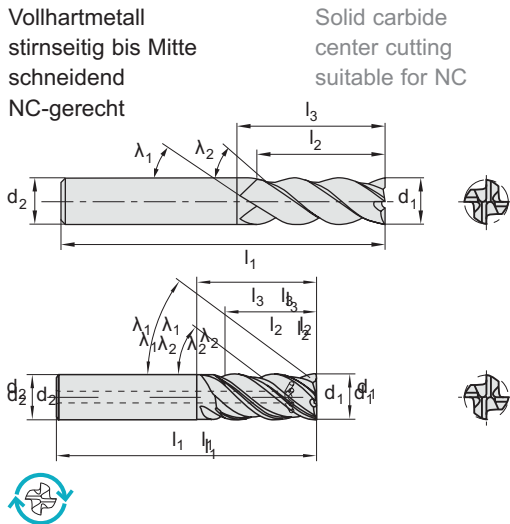
Solid carbide  
center cutting  
suitable for NC



| d <sub>2</sub>     |                | d <sub>1</sub>   |                |                   | 1526 C                                                                                        |                | 1576 C      |                |
|--------------------|----------------|------------------|----------------|-------------------|-----------------------------------------------------------------------------------------------|----------------|-------------|----------------|
| Katalog-Nr.        | l <sub>1</sub> | Cat.-No.         |                |                   | DHC SLOT                                                                                      |                |             |                |
| Typ                |                | Type             |                |                   | DIN 6527 A                                                                                    |                |             |                |
| Norm               |                | Standard         |                |                   | DIN 6527 B                                                                                    |                |             |                |
| Drallwinkel        |                | Helix angle      |                |                   | λ <sub>1</sub> / λ <sub>2</sub> / λ <sub>3</sub> = 33° / 35° / 37°                            |                |             |                |
| Schaftausführung   |                | Shank design     |                |                   | DIN 6535 HA                                                                                   |                | DIN 6535 HB |                |
| Beschichtung       |                | Coating          |                |                   | AL2 Plus                                                                                      |                |             |                |
| Schneidstoffsorte  |                | Cutting material |                |                   | LC630T                                                                                        |                |             |                |
| Besonderheiten     |                | Special features |                |                   | Konischer Schneidenteil, Kantenschutzfase<br>Tapered cutting portion, Edge protection chamfer |                |             |                |
| d <sub>1</sub> h10 |                | l <sub>1</sub>   | l <sub>3</sub> | d <sub>2</sub> h6 | Ident No.                                                                                     |                | Ident No.   |                |
| 4,80               | 6              | 54               | 18             | 6                 | 9097643                                                                                       | <b>710,-</b>   | 9097665     | <b>746,-</b>   |
| 5,75               | 6              | 54               | 18             | 6                 | 9097644                                                                                       | <b>682,-</b>   | 9097666     | <b>710,-</b>   |
| 7,75               | 9              | 58               | 22             | 8                 | 9097645                                                                                       | <b>890,-</b>   | 9097667     | <b>918,-</b>   |
| 9,70               | 11             | 66               | 26             | 10                | 9097646                                                                                       | <b>1 076,-</b> | 9097668     | <b>1 105,-</b> |
| 11,70              | 12             | 73               | 28             | 12                | 9097647                                                                                       | <b>1 292,-</b> | 9097669     | <b>1 205,-</b> |
| 13,70              | 14             | 75               | 30             | 14                | 9097648                                                                                       | <b>1 679,-</b> | 9097670     | <b>1 736,-</b> |
| 15,70              | 16             | 82               | 34             | 16                | 9097659                                                                                       | <b>2 153,-</b> | 9097671     | <b>2 210,-</b> |

Kantenschutzfase Edge protection chamfer

|  | d <sub>1</sub> | b    |
|--|----------------|------|
|  | 4,8 – 5,75     | 0,15 |
|  | 7,75–13,7      | 0,2  |
|  | 15,7           | 0,3  |



| Katalog-Nr.        | Cat.-No.         | 1525 C                                        | 1565 C         | 1570 C                                                                                                                                                      |                        |                        |                        |
|--------------------|------------------|-----------------------------------------------|----------------|-------------------------------------------------------------------------------------------------------------------------------------------------------------|------------------------|------------------------|------------------------|
| Typ                | Type             | DHC INOX                                      |                | DHC INOX IK / IC                                                                                                                                            |                        |                        |                        |
| Norm               | Standard         | DIN 6527 A / DIN 6528                         |                | DIN 6527 B                                                                                                                                                  |                        |                        |                        |
| Drallwinkel        | Helix angle      | $\lambda_1 / \lambda_2 = 41^\circ / 44^\circ$ |                |                                                                                                                                                             |                        |                        |                        |
| Schaftausführung   | Shank design     | DIN 6535 HA                                   | DIN 6535 HB    |                                                                                                                                                             |                        |                        |                        |
| Beschichtung       | Coating          | AL2 Plus                                      |                |                                                                                                                                                             |                        |                        |                        |
| Schneidstoffsorte  | Cutting material | LC630T                                        |                |                                                                                                                                                             |                        |                        |                        |
| Besonderheiten     | Special features | Kantenschutzfase<br>Edge protection chamfer   |                | Kantenschutzfase,<br>mit innerer Kühlmittel-<br>zufuhr mit radialem Austritt<br>Edge protection chamfer,<br>with internal coolant supply<br>and radial exit |                        |                        |                        |
| d <sub>1</sub> h10 | l <sub>2</sub>   | l <sub>1</sub>                                | l <sub>3</sub> | d <sub>2</sub> h6                                                                                                                                           | Ident No.              | Ident No.              | Ident No.              |
| kurz short         |                  |                                               |                |                                                                                                                                                             |                        |                        |                        |
| 4                  | 5                | 54                                            | 8              | 6                                                                                                                                                           | 9097019 <b>832,-</b>   | 9097052 <b>861,-</b>   | –                      |
| 5                  | 6                | 54                                            | 10             | 6                                                                                                                                                           | 9097020 <b>789,-</b>   | 9097053 <b>818,-</b>   | –                      |
| 6                  | 7                | 54                                            | 12             | 6                                                                                                                                                           | 9097021 <b>761,-</b>   | 9097054 <b>789,-</b>   | –                      |
| 8                  | 9                | 58                                            | 16             | 8                                                                                                                                                           | 9097022 <b>990,-</b>   | 9097055 <b>1 019,-</b> | –                      |
| 10                 | 11               | 66                                            | 20             | 10                                                                                                                                                          | 9097023 <b>1 191,-</b> | 9097056 <b>1 213,-</b> | –                      |
| 12                 | 12               | 73                                            | 24             | 12                                                                                                                                                          | 9097024 <b>1 478,-</b> | 9097057 <b>1 535,-</b> | –                      |
| 14                 | 14               | 75                                            | 28             | 14                                                                                                                                                          | 9097025 <b>1 866,-</b> | 9097058 <b>1 923,-</b> | –                      |
| 16                 | 16               | 82                                            | 32             | 16                                                                                                                                                          | 9097026 <b>2 382,-</b> | 9097059 <b>2 440,-</b> | –                      |
| 18                 | 18               | 84                                            | 36             | 18                                                                                                                                                          | 9097027 <b>2 856,-</b> | 9097060 <b>2 942,-</b> | –                      |
| 20                 | 20               | 92                                            | 40             | 20                                                                                                                                                          | 9097028 <b>3 516,-</b> | 9097061 <b>3 602,-</b> | –                      |
| lang long          |                  |                                               |                |                                                                                                                                                             |                        |                        |                        |
| 4                  | 8                | 54                                            | 12             | 6                                                                                                                                                           | 9096396 <b>1 019,-</b> | 9096407 <b>1 048,-</b> | –                      |
| 5                  | 10               | 54                                            | 15             | 6                                                                                                                                                           | 9096397 <b>990,-</b>   | 9096408 <b>1 019,-</b> | –                      |
| 6                  | 13               | 57                                            | 21             | 6                                                                                                                                                           | 9096398 <b>990,-</b>   | 9096409 <b>1 019,-</b> | 9205354 <b>1 306,-</b> |
| 8                  | 19               | 63                                            | 27             | 8                                                                                                                                                           | 9096399 <b>1 212,-</b> | 9096410 <b>1 320,-</b> | 9205355 <b>1 693,-</b> |
| 10                 | 22               | 72                                            | 32             | 10                                                                                                                                                          | 9096401 <b>1 492,-</b> | 9096412 <b>1 521,-</b> | 9205356 <b>1 995,-</b> |
| 12                 | 26               | 83                                            | 38             | 12                                                                                                                                                          | 9096402 <b>1 923,-</b> | 9096413 <b>1 980,-</b> | 9205357 <b>2 526,-</b> |
| 14                 | 26               | 83                                            | 38             | 14                                                                                                                                                          | 9096403 <b>2 468,-</b> | 9096414 <b>2 526,-</b> | –                      |
| 16                 | 32               | 92                                            | 44             | 16                                                                                                                                                          | 9096404 <b>3 243,-</b> | 9096415 <b>3 301,-</b> | 9205358 <b>4 075,-</b> |
| 18                 | 32               | 92                                            | 44             | 18                                                                                                                                                          | 9096405 <b>3 946,-</b> | 9096416 <b>4 032,-</b> | –                      |
| 20                 | 38               | 104                                           | 54             | 20                                                                                                                                                          | 9096406 <b>4 865,-</b> | 9096417 <b>4 951,-</b> | 9205359 <b>6 171,-</b> |

| Kantenschutzfase Edge protection chamfer |                |      |
|------------------------------------------|----------------|------|
|                                          | d <sub>1</sub> | b    |
|                                          | 4              | 0,1  |
|                                          | 5              | 0,15 |
|                                          | 6–12           | 0,2  |
|                                          | 14–20          | 0,3  |